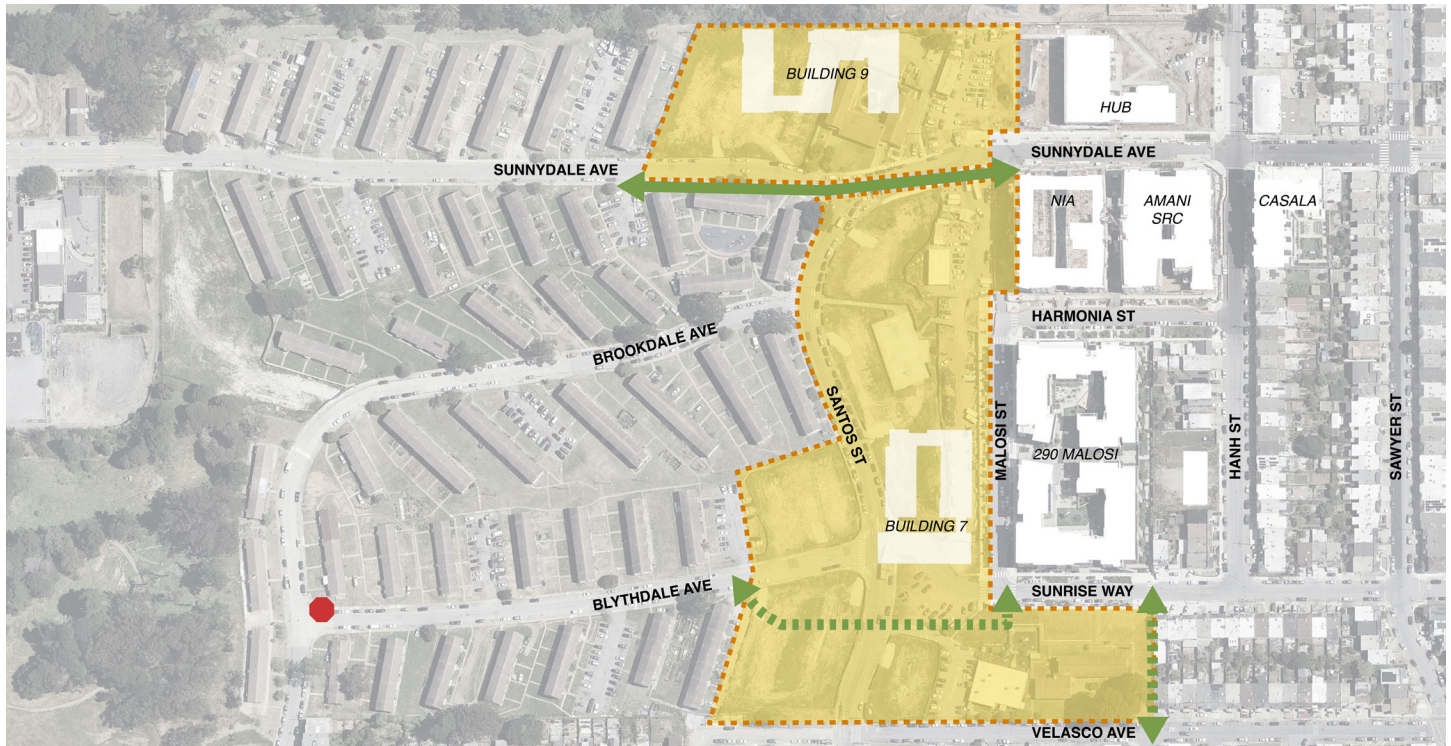


Sunnydale Phase 3 Infrastructure

What We Heard from the Community — And What Mercy Housing Is Doing

Mercy Housing is working closely with the City and County of San Francisco, community groups, and construction teams to respond to resident concerns in the Sunnydale neighborhood.



Legend Existing walkway In progress walkway Closed for construction New stop sign

NEW WALKING PATHS THROUGH CONSTRUCTION AREAS

- We're working to create 2 new walking paths through construction areas.
- The new walking paths are expected to open to the public by September.

NEW STOP SIGN AT BLYTHDALE

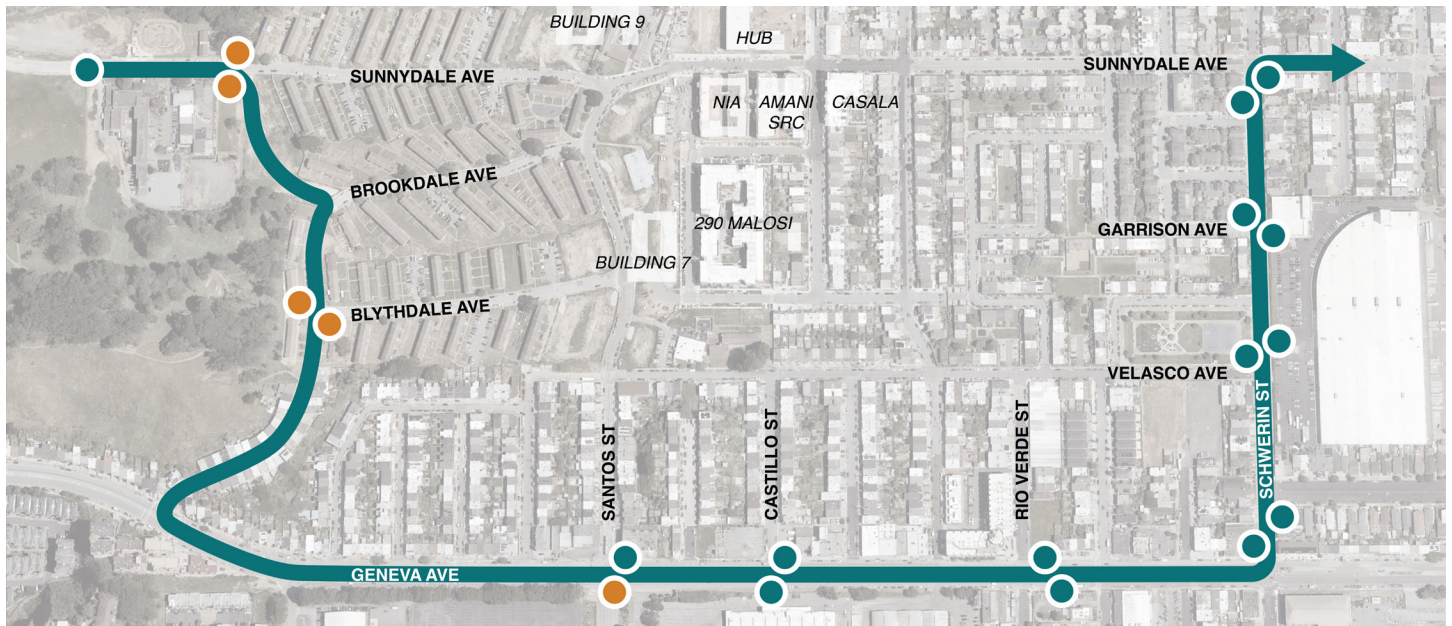
- SFMTA will install a new stop sign at the top of Blythdale.

NEW LIGHTS ON SUNNYDALE AVE WALKWAY

- We installed temporary lights along the Sunnydale Ave walkway to enhance night safety.

MORE PARKING

- Bell Property Management, SFPD, and SFMTA are partnering to address abandoned cars and free up more parking spots at Legacy Sunnydale.
- We're also exploring other temporary parking ideas to help address the community's concerns about parking.



Legend — Muni 9/9R Bus ● Existing Bus Stop ● New Bus Stop

MUNI BUS 9/9R

- SFMTA agreed to remind bus drivers about the temporary 9/9R stop near Geneva and Brookdale.
- If a bus doesn't stop, report it by calling 311 or using the SF 311 app. Include the bus number and time of the missed stop.
- New 9/9R stops at Brookdale and Blythdale are effective as of April 15th.

BETTER TRANSPORTATION FOR SENIORS + RESIDENTS WITH MOBILITY NEEDS

- Paratransit is available now! We can help residents sign up.
- We're working with the Mayor's Office of Housing and Community Development and SF Municipal Transportation Agency (SFMTA) to explore other shuttle services, though no commitment has been made by the City yet.

RODENTS

- We're working with SFHA and Bell Property Management to address pest issues. The construction team will also work to address any pest issues associated with future demolition work.

TRASH PICKUP

- We're working with a private vendor to remove trash and illegal dumping.

WE'RE HERE TO HELP!

Email: SunnydaleConstruction@mercyhousing.org

Phone: (415) 805-9448

Visit: Sunnydale Resource Center (1525 Sunnydale Ave)
Monday–Friday, 9am–5pm

Ask for Joc Wilson or any front desk team member, or call (628) 899-0323 to schedule an appointment.

USING 311

iPhone (iOS) or Android:

1. Open the App Store or Google Play Store
2. Search for "SF 311"
3. Tap Download or Install
4. Open the app to report problems

No smartphone? Call 311 or (415) 701-2311 outside SF. Service is available 24/7 in 160+ languages.